



SECRET JARDIN



ASSEMBLY INSTRUCTIONS

**PRO**

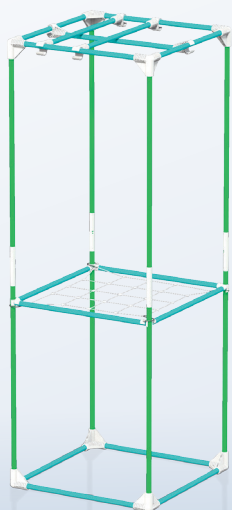
DARK ROOM R3.00

DARK ROOM R2.60

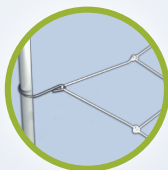
ORCA ROOM R2.60

## SOMMAIRE

■ DR60 .....	p 3
■ DR90 .....	p 4
■ DR120 .....	p 5
■ DR150 .....	p 6
■ DR240 .....	p 7
■ DR300 .....	p 8
■ DR150w .....	p 9
■ DR240w .....	p 10
■ DR300w .....	p 11
■ DR480w 2.6 .....	p 12
■ DR600w 2.6 .....	p 14
■ OR120 2.6 .....	p 16
■ OR240w 2.6 .....	p 17
■ TENTS SPECIFICATIONS & KIT CONTENTS .....	p 18



**WebIT**



**Space Booster**



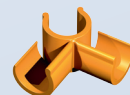
**8 x T19-C**



**15 x T19-A**



**8 x C19-Y**



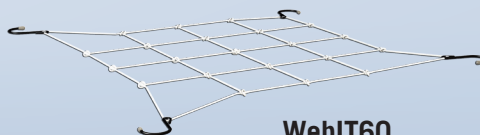
**4 x C19-SB**



**6 x C19-H**



**4 x C19-L**



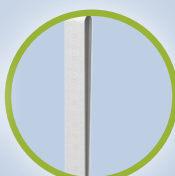
**WebIT60**



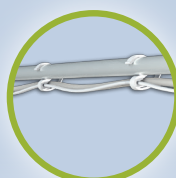
**HookIT**



**StrapIT**

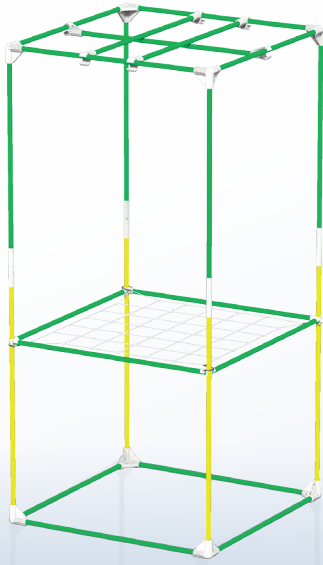


**CableIT**

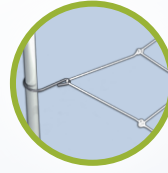


**PocketIT**





WebIT



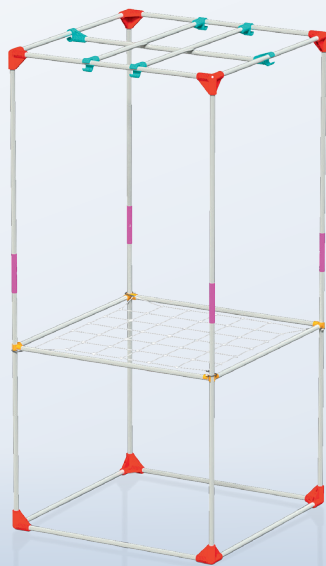
Space Booster



4 x T19-D



19 x T19-C



8 x C19-Y



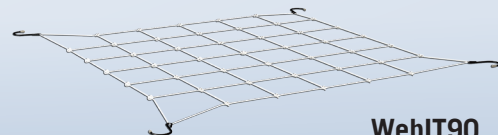
4 x C19-SB



6 x C19-H



4 x C19-L



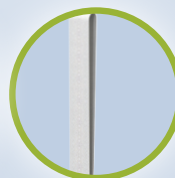
WebIT90



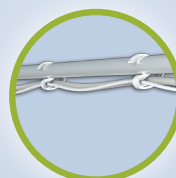
HookIT



StrapIT

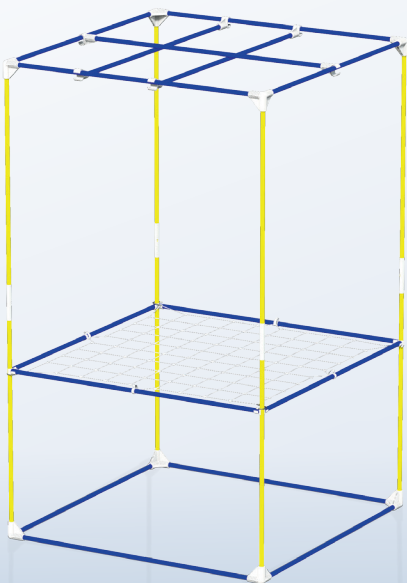


CableIT

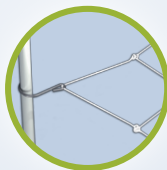


PocketIT

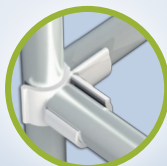




WebIT



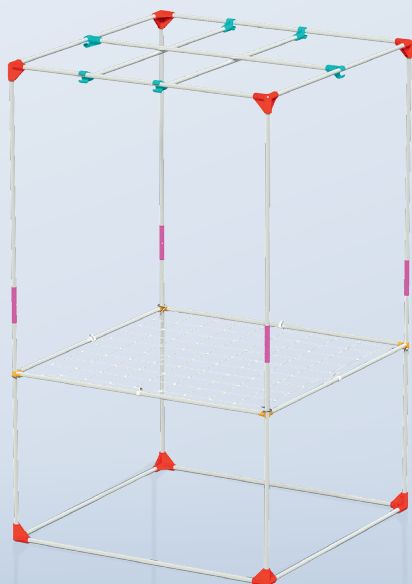
Space Booster



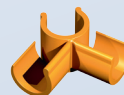
15 x T19-E



8 x T19-D



8 x C19-Y



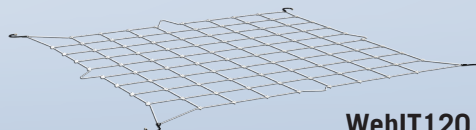
4 x C19-SB



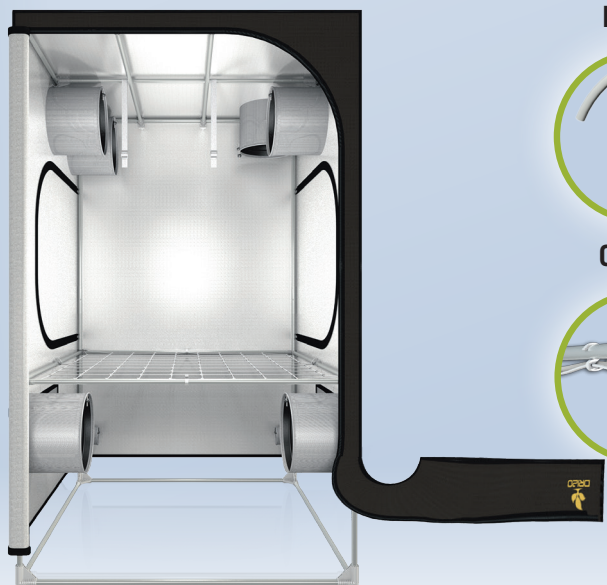
6 x C19-H



4 x C19-L



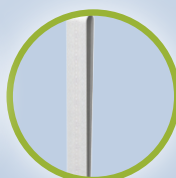
WebIT120



HookIT



StrapIT

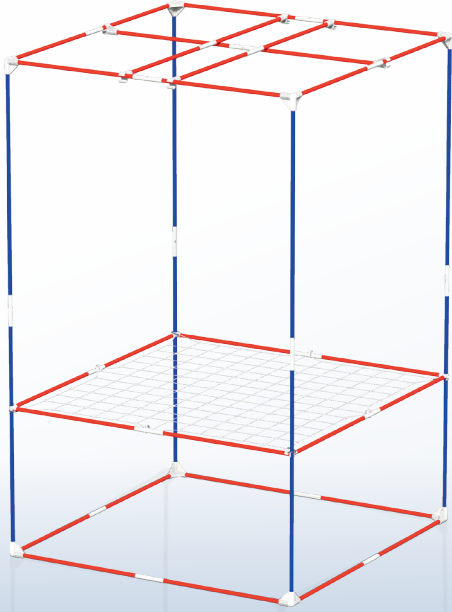


CableIT

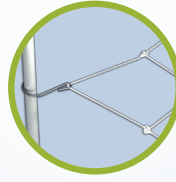


PocketIT





WebIT

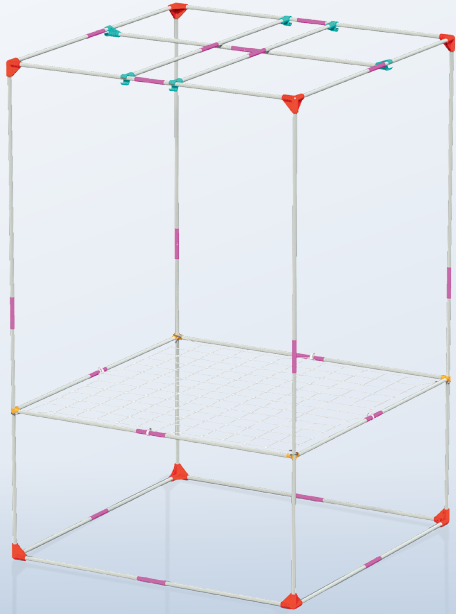


8 x T19-E

Space Booster



30 x T19-B



8 x C19-Y



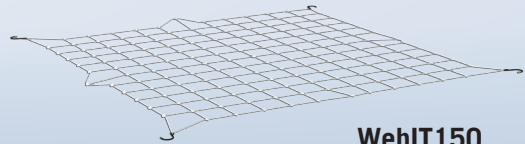
4 x C19-SB



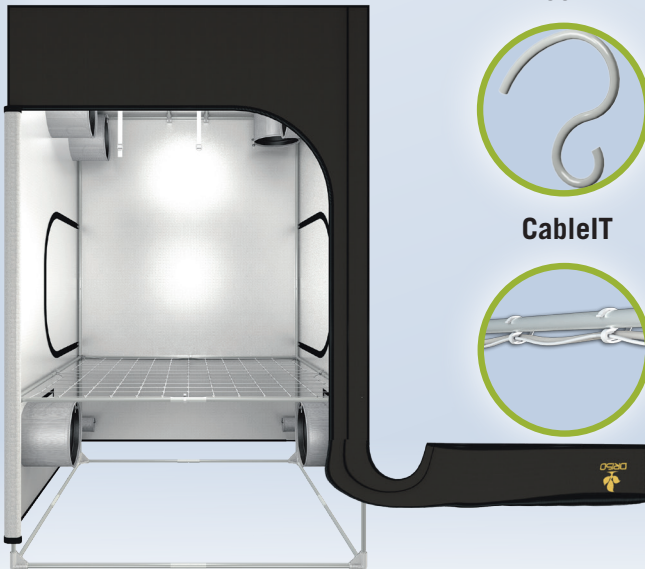
6 x C19-H



19 x C19-L



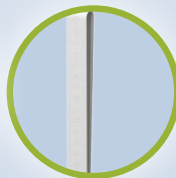
WebIT150



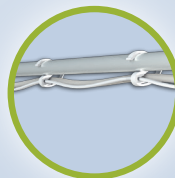
HookIT



StrapIT

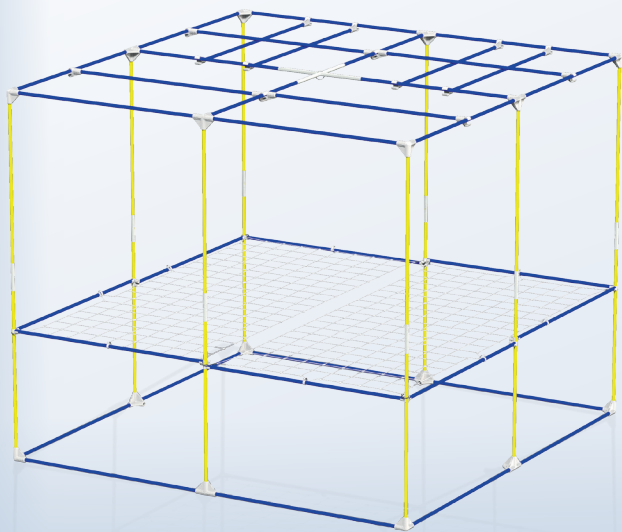


CableIT

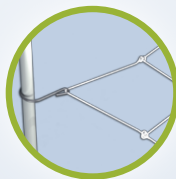


PocketIT





WebIT



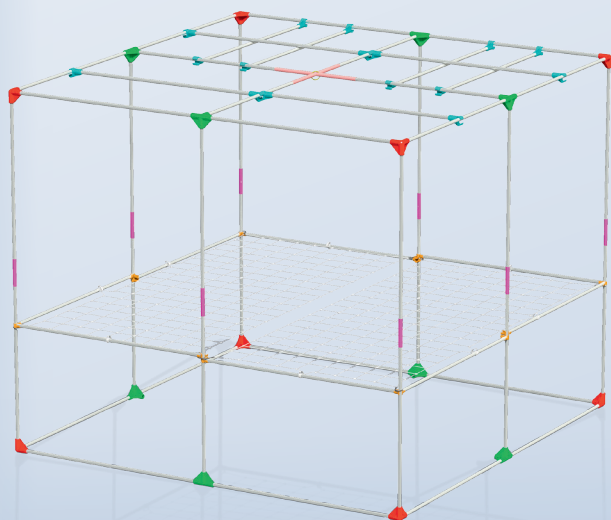
Space Booster



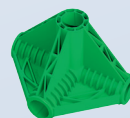
36 x T19-E



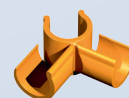
16 x T19-D



8 x C19-Y



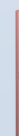
8 x C19-K



12 x C19-SB



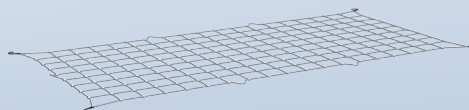
16 x C19-H



2 x C19-XL



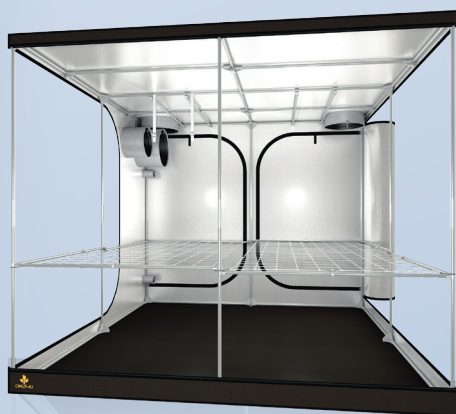
8 x C19-L



2 x WebIT240w



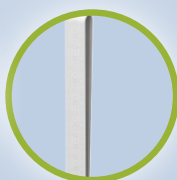
1 x C19-RG



HookIT



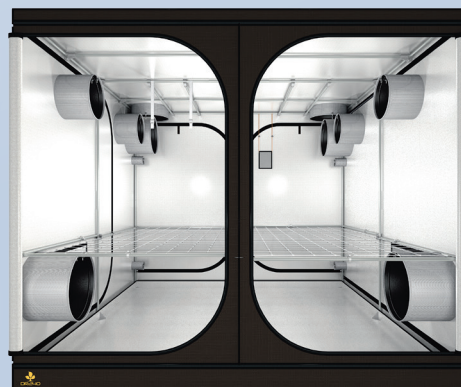
StrapIT

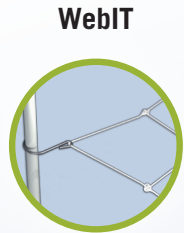
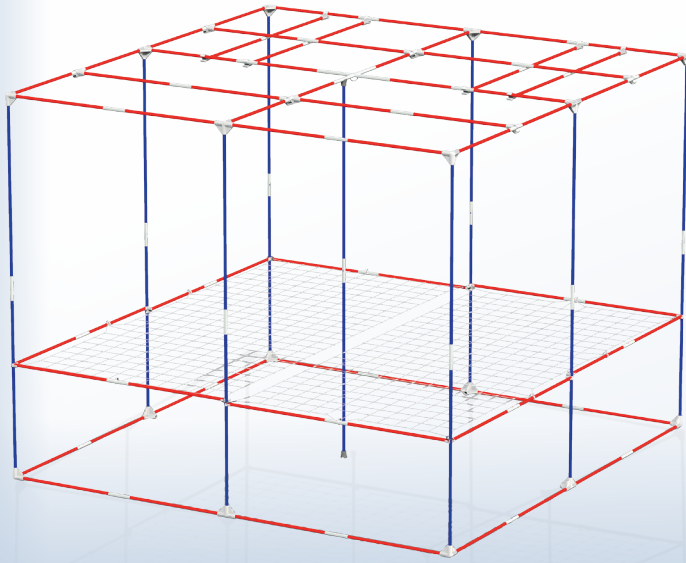


CableIT



PocketIT

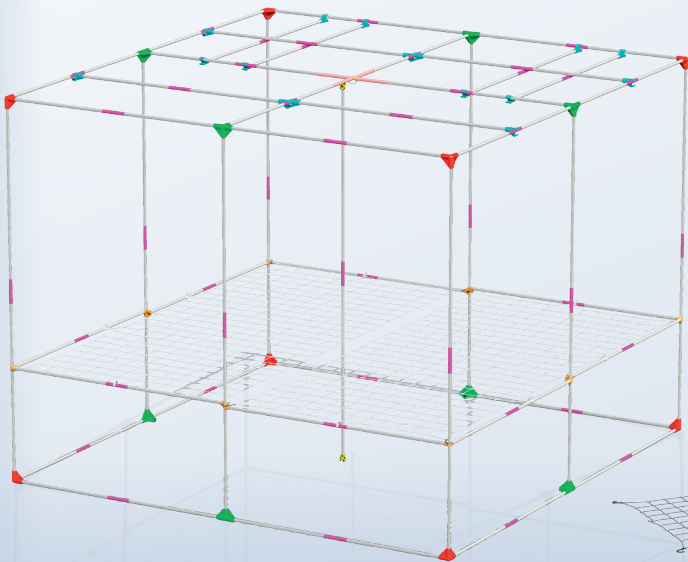




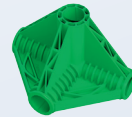
18 x T19-E



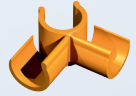
72 x T19-B



8 x C19-Y



8 x C19-K



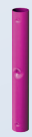
12 x C19-SB



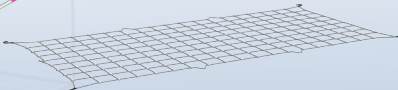
16 x C19-H



2 x C19-XL



45 x C19-L



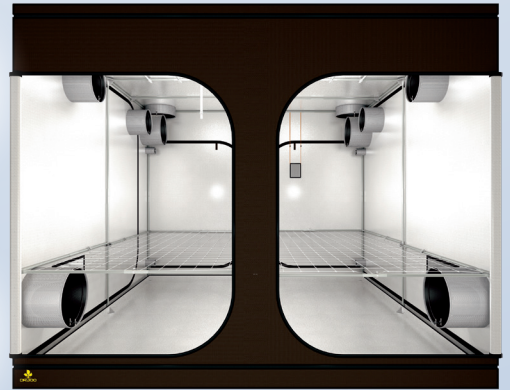
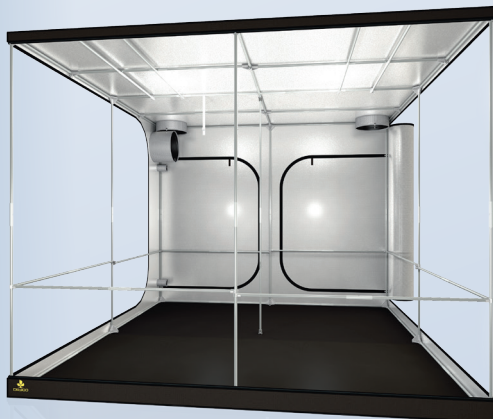
2 x WebIT300w



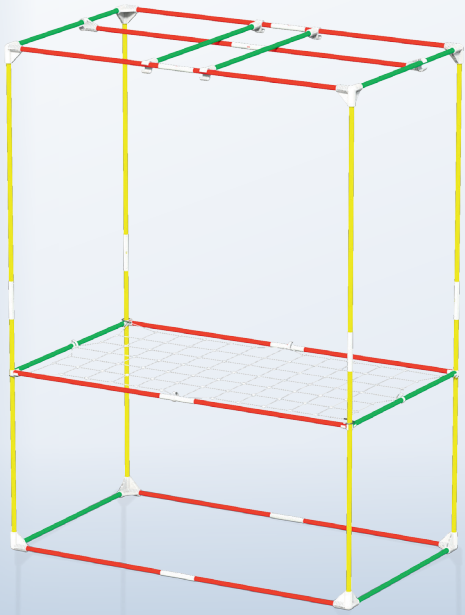
2 x C19-FR



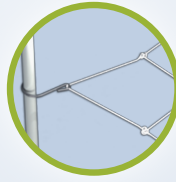
1 x C19-RG



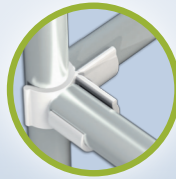




WebIT



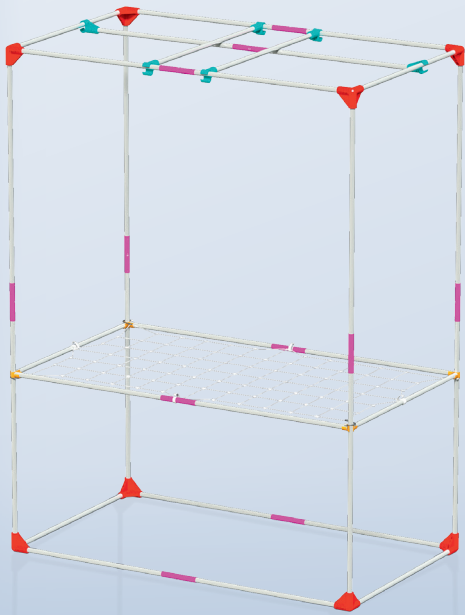
Space Booster



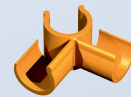
8 x T19-D

8 x T19-C

14 x T19-B



8 x C19-Y



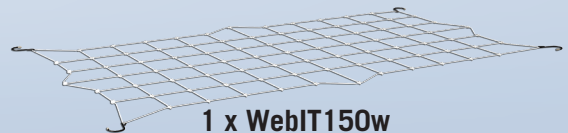
4 x C19-SB



6 x C19-H



11 x C16-L

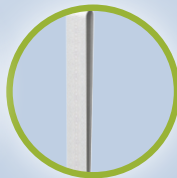


1 x WebIT150w

HookIT



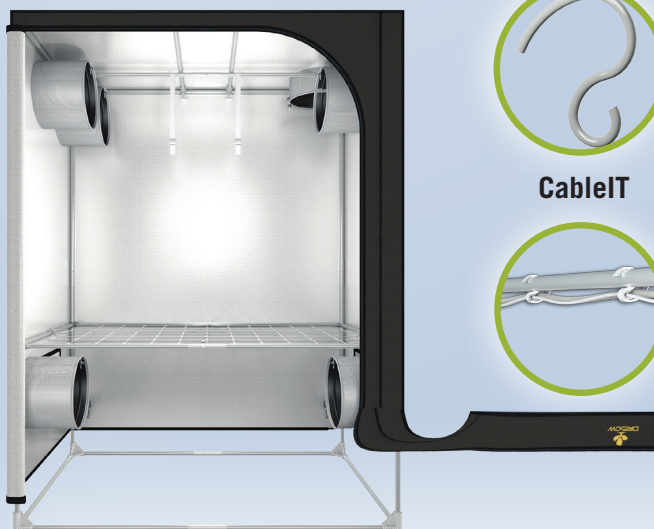
StrapIT

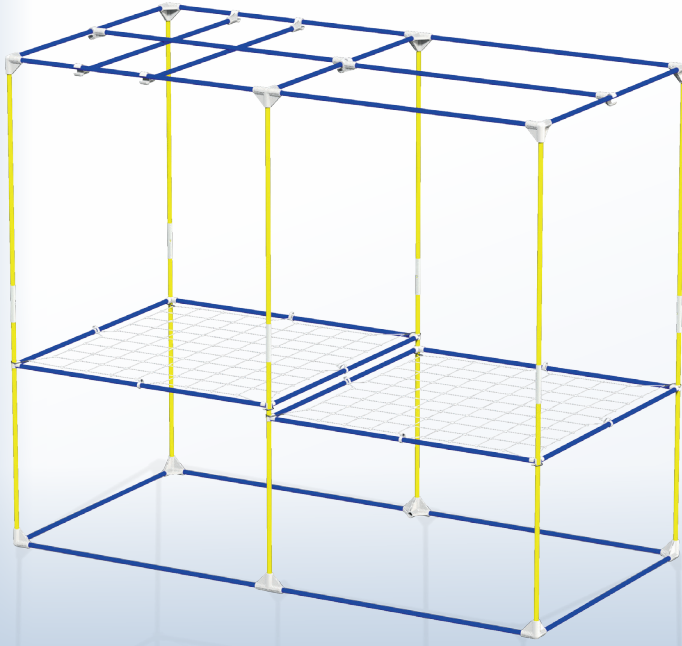


CableIT

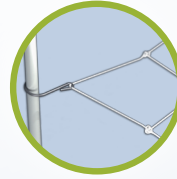


PocketIT





**WebIT**



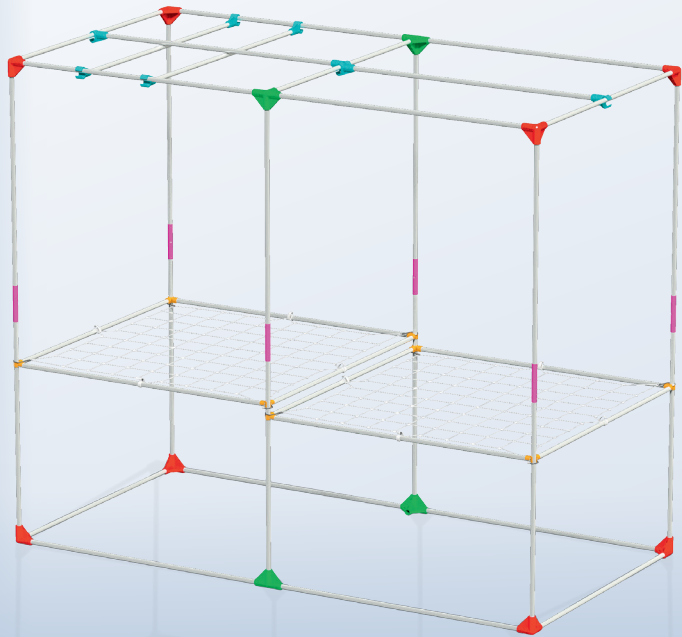
25 x T19-E



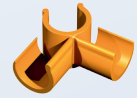
**Space Booster**



12 x T19-D



8 x C19-Y



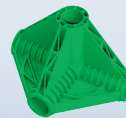
8 x C19-SB



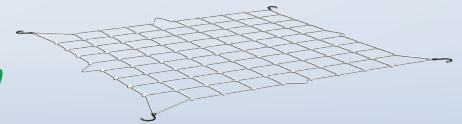
8 x C19-H



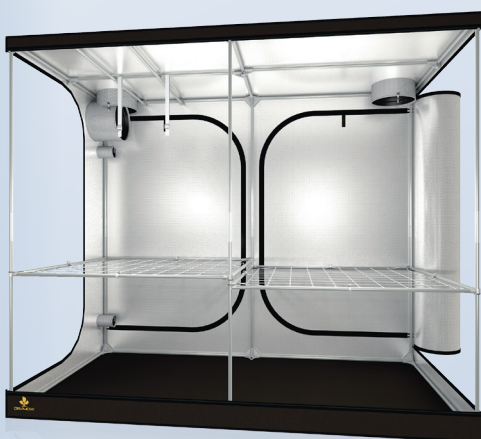
6 x C19-L



4 x C19-K



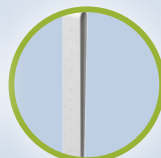
2xWebIT120



**HookIT**



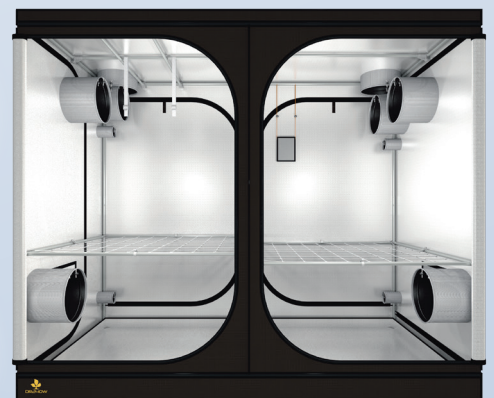
**StrapIT**

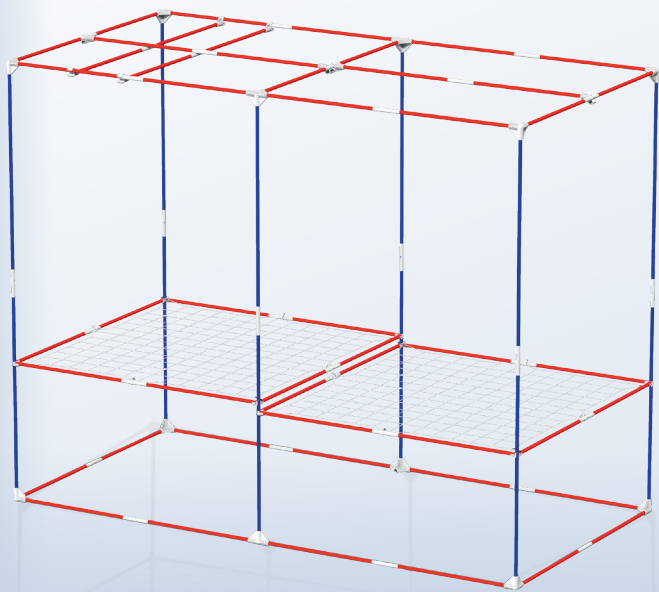


**CableIT**

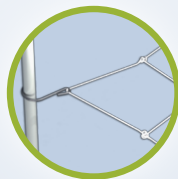


**PocketIT**



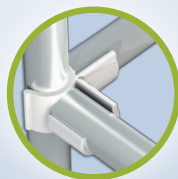


WebIT

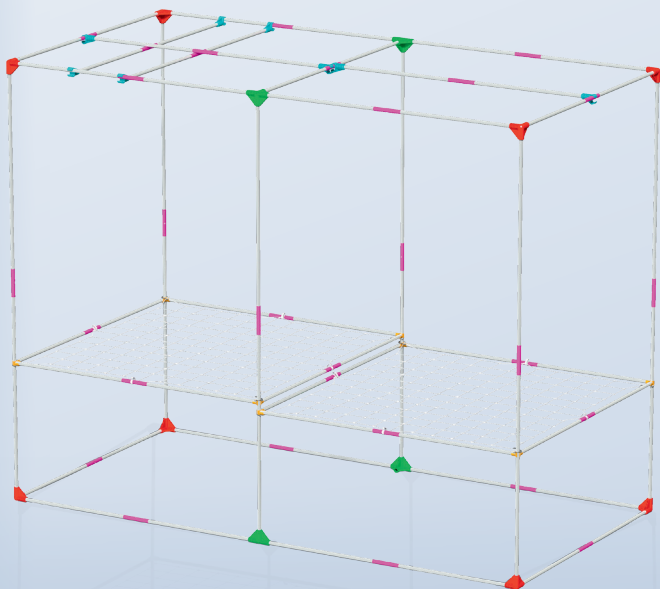


12 x T19-E

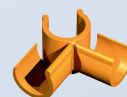
Space Booster



50 x T19-B



8 x C19-Y



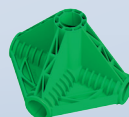
8 x C19-SB



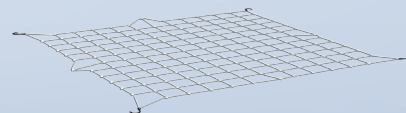
8 x C19-H



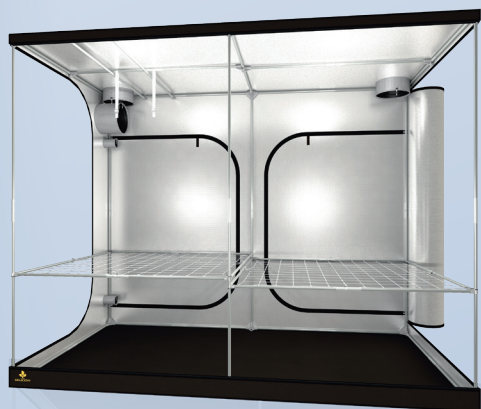
31 x C19-L



4 x C19-K



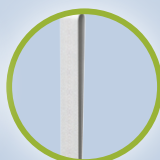
2 x WebIT150



HookIT



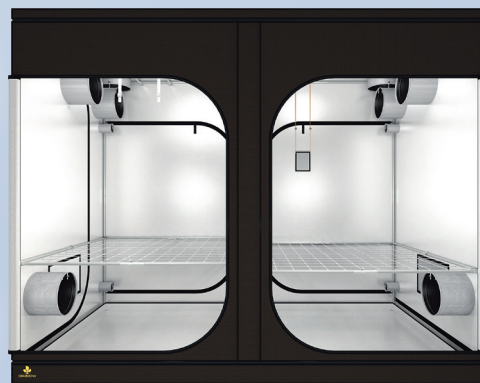
StrapIT

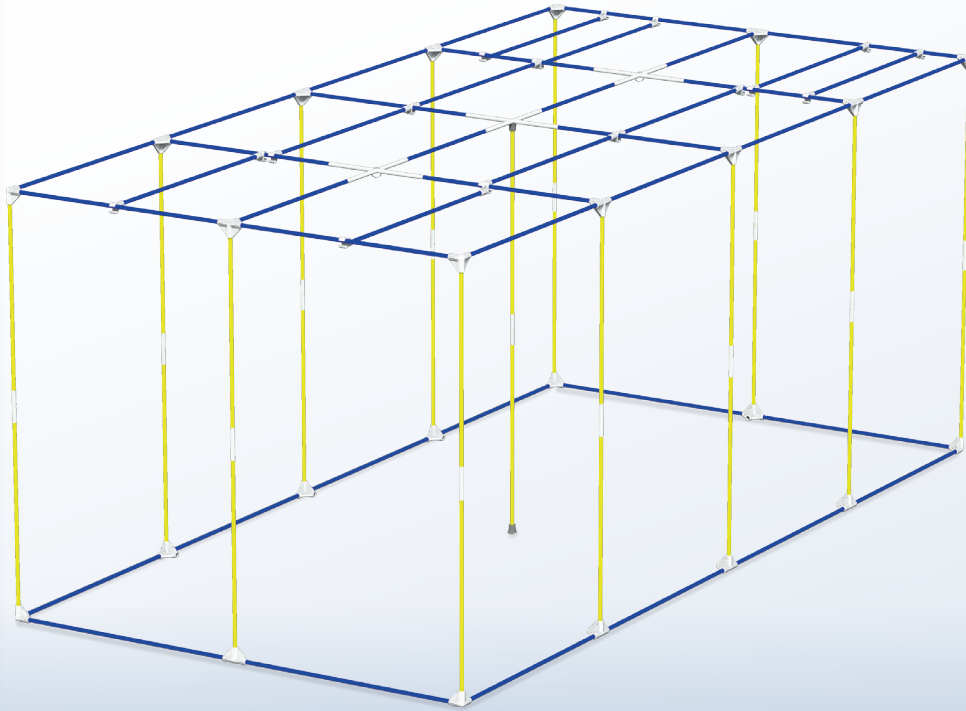


CableIT



PocketIT



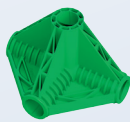


44 x T19-E

26 x T19-D



8 x C19-Y



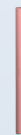
16 x C19-K



20 x C19-H



13 x C19-L



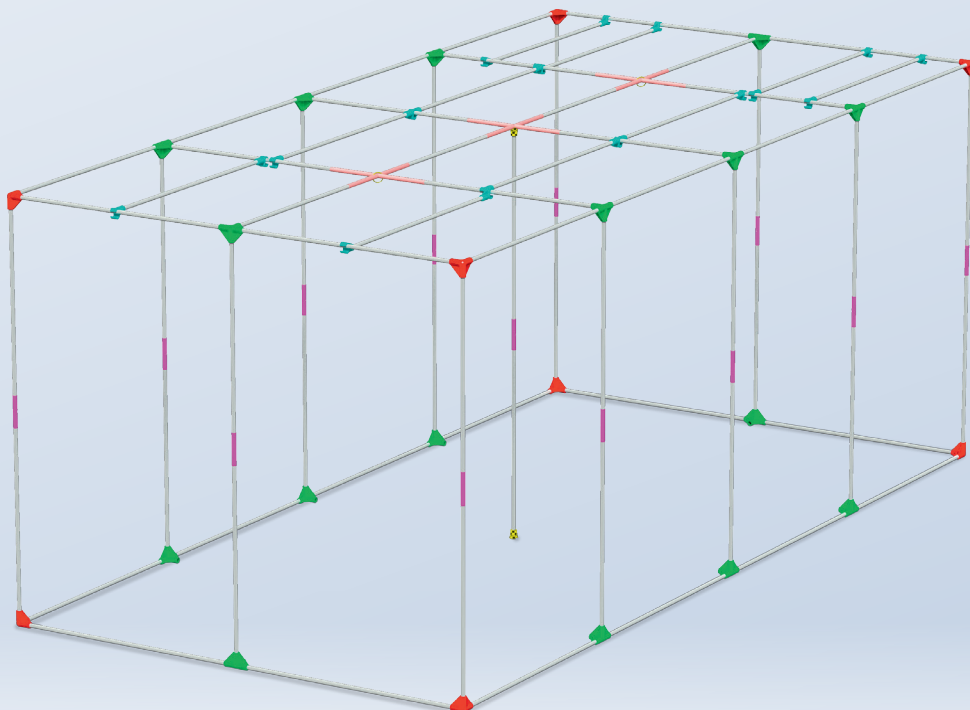
6 x C19-XL



2 x C19-FR



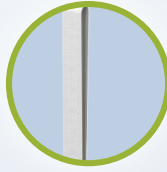
2 x C19-RG



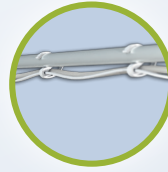
HookIT



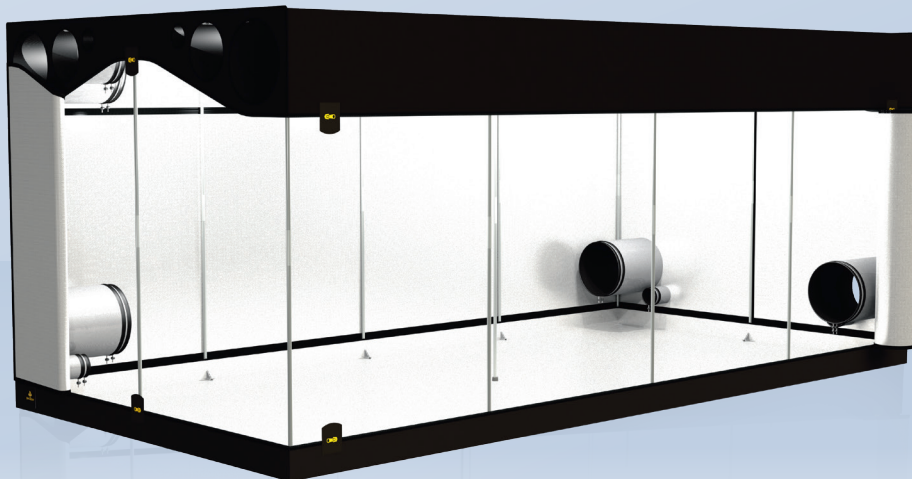
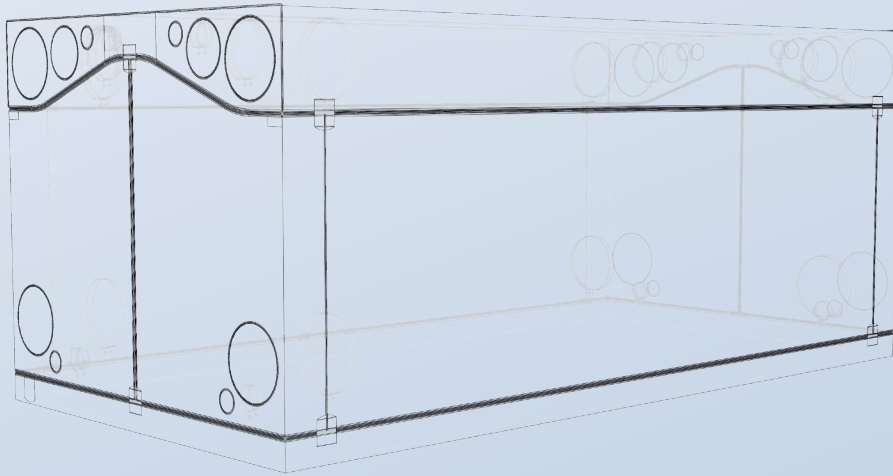
StrapIT

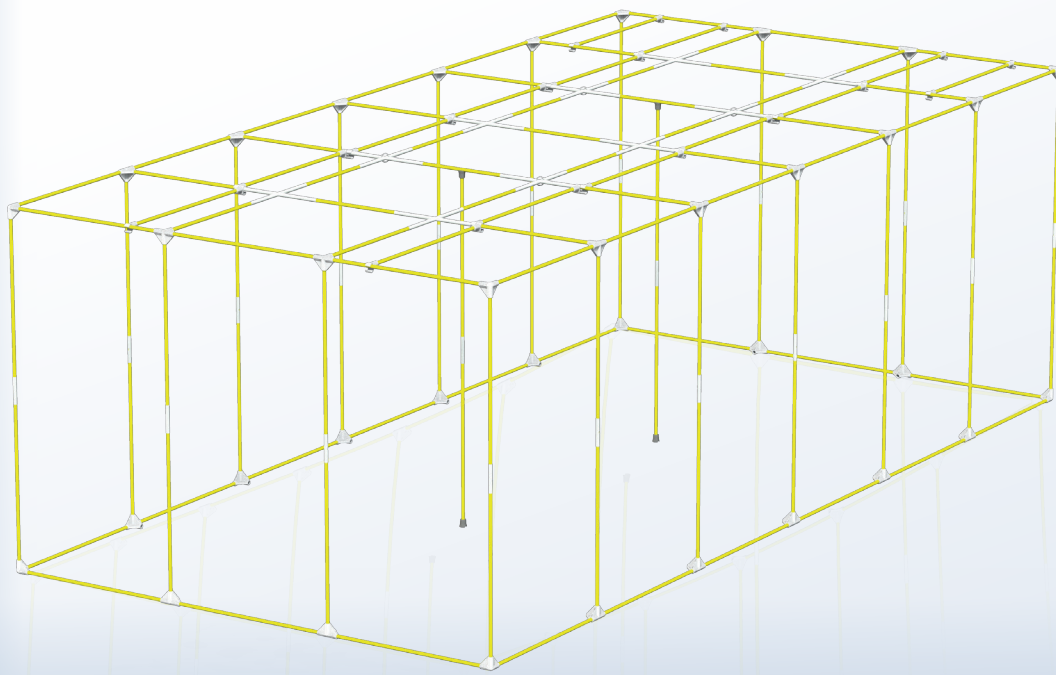


CableIT



PocketIT

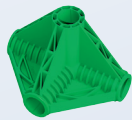




117 x T19-E



8 x C19-Y



28 x C19-K



28 x C19-H



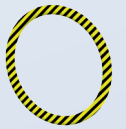
20 x C19-L



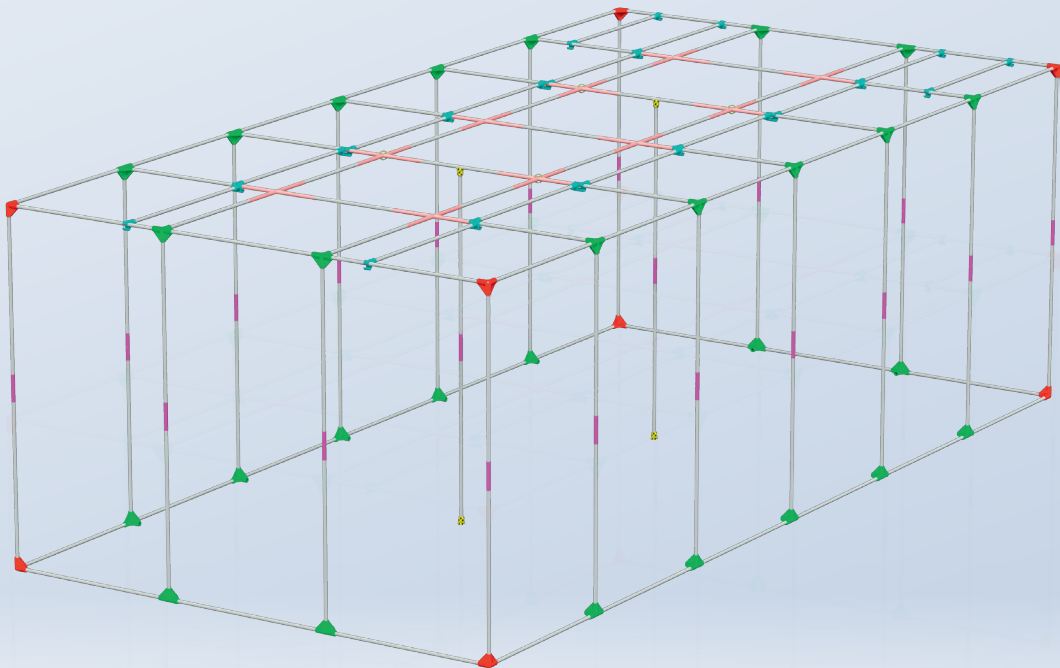
20 x C19-XL



4 x C19-FR



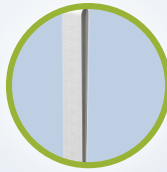
4 x C19-RG



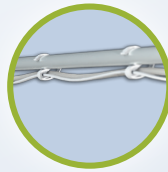
HookIT



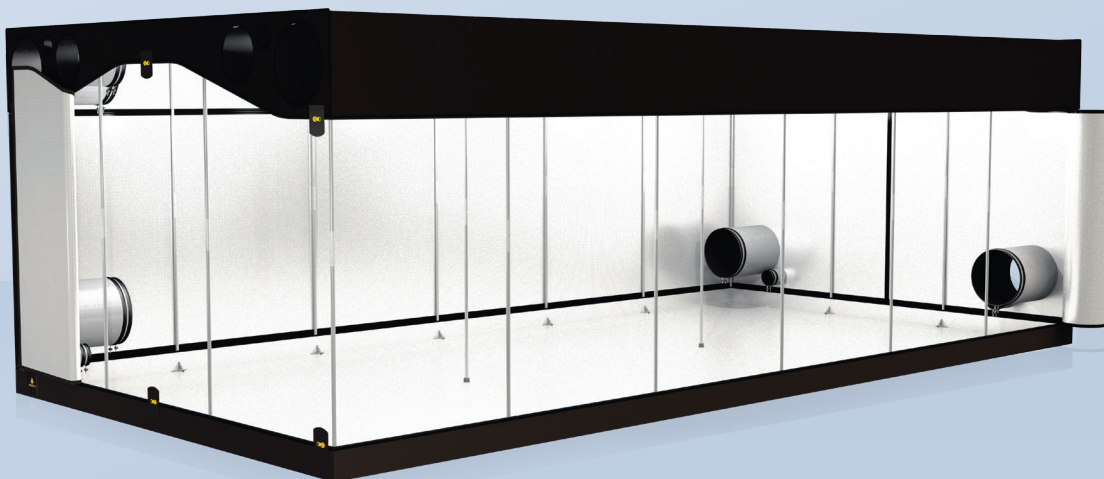
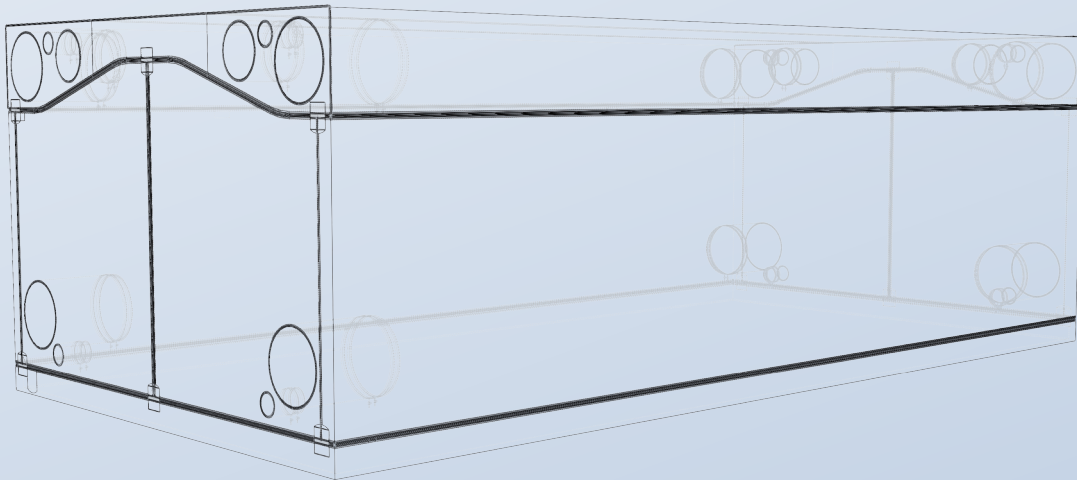
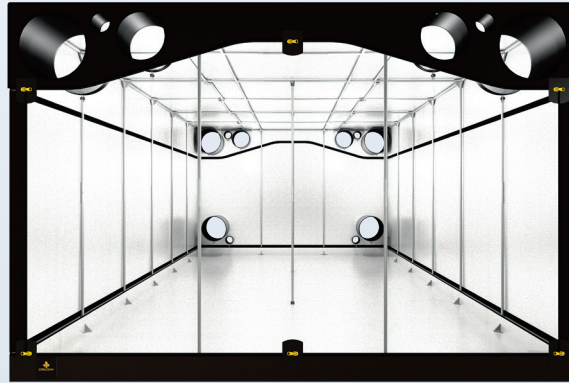
StrapIT

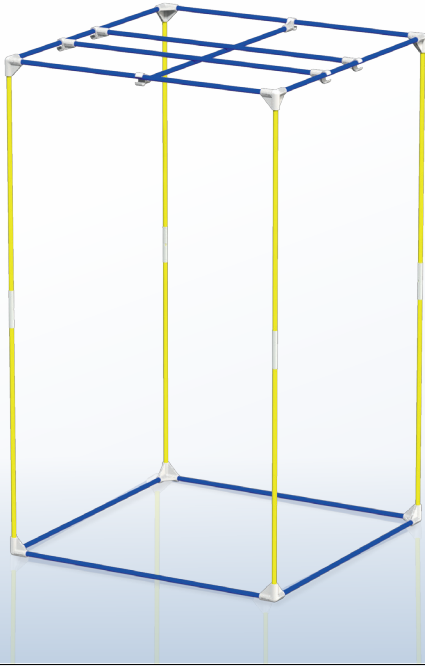


CableIT



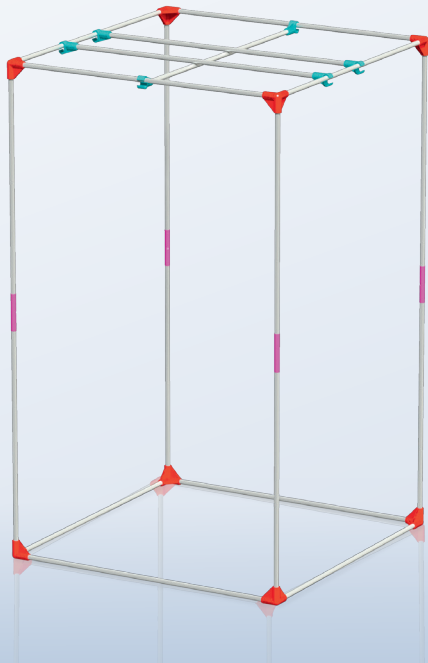
PocketIT





11 x T19-E

8 x T19-D



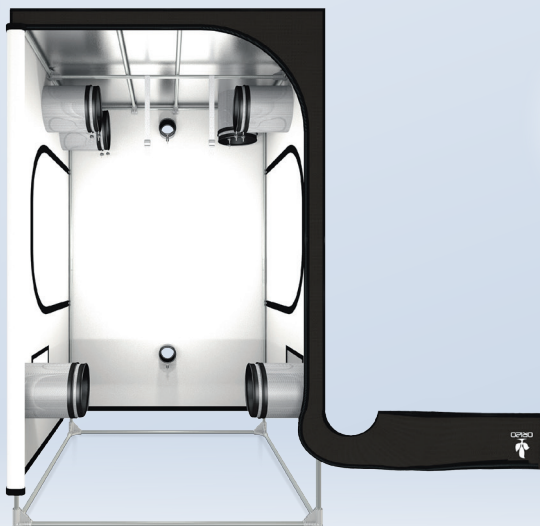
8 x C19-Y



6 x C19-H



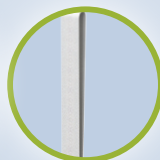
4 x C19-L



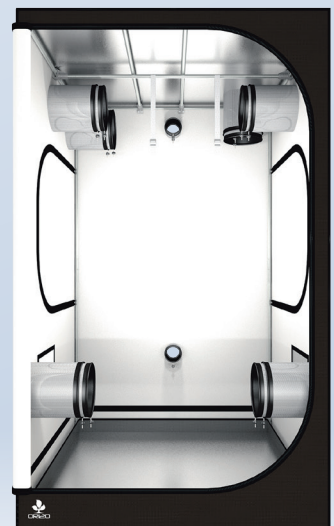
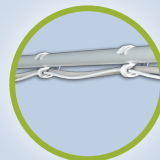
HookIT



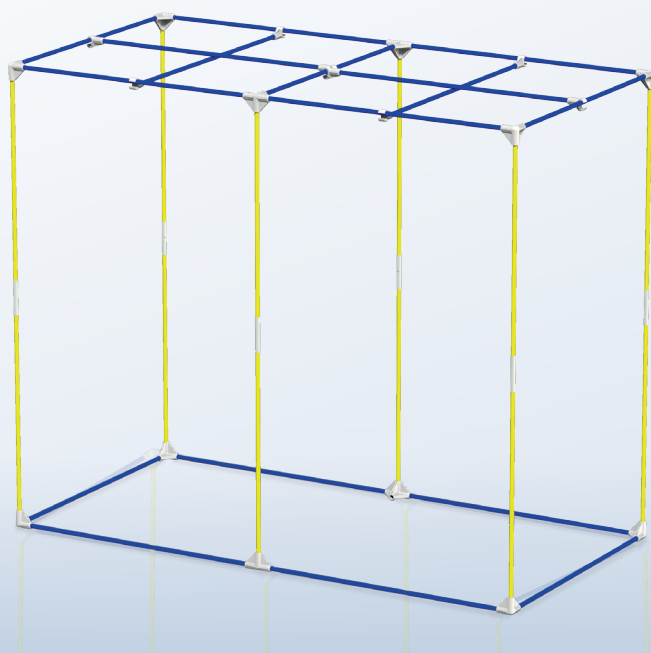
StrapIT



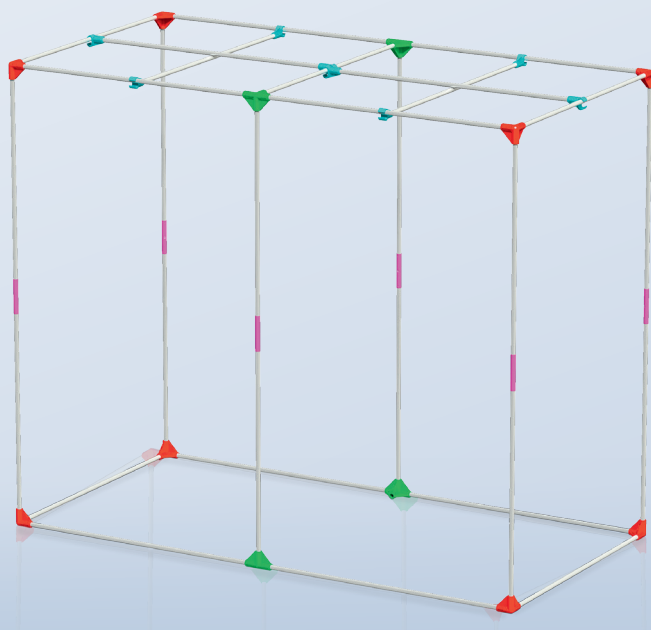
CableIT



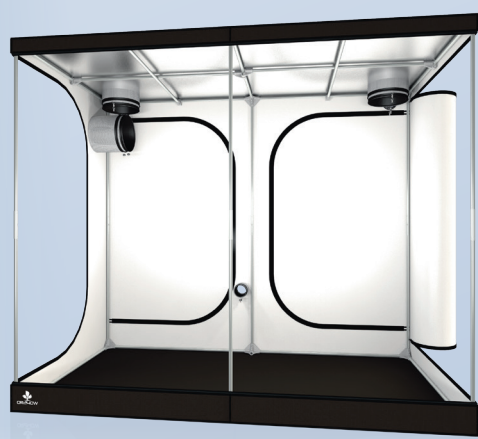




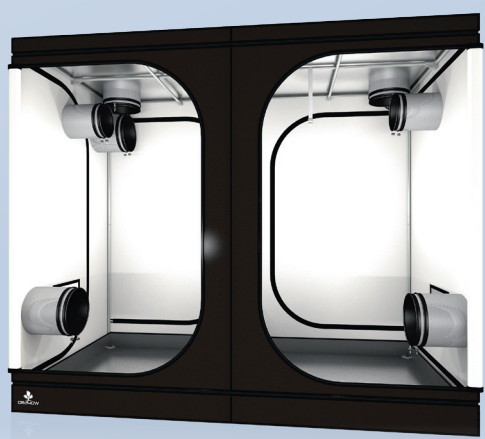
17 x T19-E  
12 x T19-D



4 x C19-K      8 x C19-Y  
6 x C19-L      8 x C19-H



**HookIT**  
**StrapIT**  
**CableIT**





**METRIC SYSTEM**

REF	PROFESSIONAL GROW TENTS		WGT kg	ASSEMBLED		WEBBING		DOUBLE LAYERS SOCK CONFIG				HANDLING		ACCESSORIES		LIGHTING ADVISED		VOL		EXTRACTION ADVISED			
	DESIGNATION	REV		W cm	D cm	H cm	Web/T Elastic	Web Thread	Extraction Ø (mm)	Intracation Ø (mm)	Cables Ø (mm)	Cool/Flues Ø (mm)	Poles #	Weight Max/Pole	StrapIT Par #	HookIT Par #	CableIT #	Cool Tube HPS 2000°K	Led	m³	HPS (every 30-60s) Extraction	Intake	LED (every 1-2 min) Extraction
DR60	Dark Room 60x60x170 cm	R3.00	60	60	170	1 Web680	180	2	75	3	280	2	3	15 kg	1	15	1x HPS250W	1x LED150W	0,6	75 m³/h	-	35 m³/h	-
DR80	Dark Room 80x80x185 cm	R3.00	90	90	185	1 Web90	230	2	75	3	280	2	3	15 kg	1	15	1x HPS400W	1x LED300W	1,5	180 m³/h	-	90 m³/h	-
DR120	Dark Room 120x120x200 cm	R3.00	120	120	200	1 Web120	280	2	75	3	280	2	3	15 kg	1	15	1x HPS600W	1x LED400W	2,9	345 m³/h	173 m³/h	175 m³/h	-
DR150	Dark Room 150x150x235 cm	R3.00	150	150	235	1 Web150	280	2	75	3	280	2	3	15 kg	1	15	1x HPS1000W	1x LED600W	5,3	635 m³/h	318 m³/h	315 m³/h	158 m³/h
DR240	Dark Room 240x240x200 cm	R3.00	240	240	200	2 Web1250w	380	4	75	4	280	2	4	15 kg	2	45	4x HPS600W	4x LED600W	11,5	1380 m³/h	690 m³/h	690 m³/h	345 m³/h
DR300	Dark Room 300x300x235 cm	R3.00	300	300	235	2 Web1300w	380	4	75	4	280	2	4	15 kg	2	45	4x HPS1000W	4x LED600W	21,2	2540 m³/h	1270 m³/h	1270 m³/h	635 m³/h
DR150w	Dark Room 150x90x200 cm	R3.00	150	90	200	1 Web150w	280	2	75	3	280	2	3	15 kg	1	15	1x HPS600W	1x LED400W	2,7	325 m³/h	163 m³/h	160 m³/h	-
DR240w	Dark Room 240x120x200 cm	R3.00	240	120	200	2 Web1120	280	4	75	4	280	2	4	15 kg	1	2	2x HPS600W	2x LED400W	5,8	690 m³/h	345 m³/h	345 m³/h	173 m³/h
DR300w	Dark Room 300x150x235 cm	R3.00	300	150	235	2 Web1150	280	4	75	4	280	2	4	15 kg	1	2	2x HPS1000W	2x LED600W	10,8	1270 m³/h	635 m³/h	635 m³/h	318 m³/h
DR480w	Dark Room 480x240x200 cm	R2.60	480	240	200	-	350	4	350	4	250	4	10	15 kg	2	8	8x HPS600W	8x LED400W	23,0	2765 m³/h	1383 m³/h	1380 m³/h	690 m³/h
DR600w	Dark Room 600x300x200 cm	R2.60	600	300	200	-	350	4	350	4	250	4	14	15 kg	2	8	8x HPS1000W	8x LED600W	36,0	4320 m³/h	2160 m³/h	2160 m³/h	1080 m³/h
OR120	Orca Room 120x120x200 cm	R2.60	120	120	200	-	200	2	75	2	250	2	3	15 kg	1	15	1x HPS600W	1x LED400W	2,9	345 m³/h	173 m³/h	175 m³/h	-
OR240w	Orca Room 240x120x200 cm	R2.60	240	120	200	-	250	3	250	2	200	2	4	15 kg	1	2	2x HPS600W	2x LED400W	5,8	690 m³/h	345 m³/h	345 m³/h	173 m³/h

REF	DESIGNATION	DESIGNATION	DR60	DR90	DR120	DR150	DR240	DR300	DR150w	DR240w	DR300w	DR480w	DR600w
T19-A	Pole Ø19 mm 554 mm long	Pole Ø0.75" 21.8" long	15			30		72	14		50		
T19-B	Pole Ø19 mm 726 mm long	Pole Ø0.75" 28.6" long	8	19					8				
T19-C	Pole Ø19 mm 826 mm long	Pole Ø0.75" 32.5" long		4					8				
T19-D	Pole Ø19 mm 975 mm long	Pole Ø0.75" 38.4" long					16			12			
T19-E	Pole Ø19 mm 1153 mm long	Pole Ø0.75" 45.4" long			15		36			25			
C19-Y	Corner Ø19 mm 3 axes Y shape	Corner Ø0.75" 3 axes Y shape	8	8	8	8	8	8	8	8	8	8	8
C19-K	Corner Ø19 mm 4 axes K shape	Corner Ø0.75" 4 axes K shape	8	8	8	8	8	8	8	8	8	8	8
C19-L	Link Ø19 mm Straight Joint	Link Ø0.75" Straight Joint	4	4	4	4	4	4	11	6	31	13	28
C19-XL	Link Ø19 mm Straight Joint XL	Link Ø0.75" Straight Joint XL							2	2			20
C19-H	Handling Ø19 mm 1 axe I shape	Handling Ø0.75" 1 axe I shape	6	6	6	6	6	6	6	8	8	8	28
C19-SB	Space Booster Ø19 mm 2 axes Y shape	Space Booster Ø0.75" 2 axes Y shape	4	4	4	4	4	4	4	4	4	4	4
C19-RF	Rubber Feet Ø19 mm 1 axe I shape	Rubber Feet Ø0.75" 1 axe I shape											
C19-RG	10x Link Ring Ø shape	10x Link Ring Ø shape											

**MAIN TECHNO DR R3.00**

Main Fabric: Mylar 210D  
 Poles Ø19 mm  
 Plastic Corners 5 mm thick  
 Water Tray: Mylar 210D  
 Space Booster Inc.  
 Web Plant Support Inc.  
 Bag Fabric: 600D

**MAIN TECHNO DR R2.60**

Main Fabric: Mylar 210D  
 Poles Ø19 mm  
 Plastic Corners 5 mm thick  
 Water Tray: Mylar 210D  
 Bag Fabric: 600D

**MAIN TECHNO OR R2.60**

Main Fabric: Orca 210D  
 Poles Ø19 mm  
 Plastic Corners 5 mm thick  
 Water Tray: Mylar 210D  
 Bag Fabric: 600D

# IMPERIAL SYSTEM

REF	DESIGNATION		ASSEMBLED			WEAVING		DOUBLE LAYERS SOCK CONFIG			HANDLING		ACCESSORIES		LIGHTING ADVISED		VOL.		EXTRACTION ADVISED			
	REV	Net lb	W in	D in	H in	Web/T (Elastic)	Web/T (Thread)	Extraction Ø (in)	Ø (in)	Intercast Ø (in)	Cables Ø (in)	Coil/Clubs Ø (in)	Poles #	Weight Max/Pole	Strap/T Hook/T Pair #	Cable/T Hook/T Pair #	Cool Tube HPS 2000°K	Led	cf	HPS Extraction	LED (every 1-2 min) Intake	Extraction
DR60	R3.00	16.1	23.5	23.5	67.0	1 Web60	1 Web60	7	1	7	3	3	3	30 lb	1	1	1x HPS250W	1x LED150W	21	43 cfm	21 cfm	-
DR90	R3.00	22.0	35.5	35.5	73.0	1 Web90	1 Web90	9	2	9	2	3	3	30 lb	1	1	1x HPS400W	1x LED300W	53	106 cfm	53 cfm	-
DR120	R3.00	29.5	47.0	47.0	78.5	1 Web120	1 Web120	11	2	11	2	3	3	30 lb	1	1	1x HPS600W	1x LED400W	100	200 cfm	100 cfm	-
DR150	R3.00	40.1	59.0	59.0	92.5	1 Web150	1 Web150	11	2	11	2	3	3	30 lb	1	1	1x HPS1000W	1x LED600W	186	372 cfm	186 cfm	93 cfm
DR240	R3.00	72.3	94.5	94.5	78.5	2 Web/T240w	2 Web/T240w	15	4	15	2	4	8	30 lb	2	4	4x HPS600W	4x LED400W	405	810 cfm	405 cfm	202 cfm
DR300	R3.00	107	118.0	118.0	92.5	2 Web/T300w	2 Web/T300w	15	4	15	2	4	8	30 lb	2	4	4x HPS1000W	4x LED600W	744	1488 cfm	744 cfm	372 cfm
DR150w	R3.00	28.4	59.0	35.5	78.5	1 Web150w	1 Web150w	11	2	11	2	3	3	30 lb	1	1	1x HPS600W	1x LED400W	95	190 cfm	95 cfm	-
DR240w	R3.00	47.4	94.5	47.0	78.5	2 Web/T120	2 Web/T120	11	4	11	2	4	4	30 lb	1	2	2x HPS600W	2x LED400W	201	403 cfm	201 cfm	101 cfm
DR300w	R3.00	60.6	118.0	59.0	92.5	2 Web/T150	2 Web/T150	11	4	11	2	4	4	30 lb	1	3	2x HPS1000W	2x LED600W	372	744 cfm	372 cfm	186 cfm
DR480w	R2.60	110	94.5	189.0	78.5	-	-	14	4	14	4	8	10	30 lb	2	8	8x HPS600W	8x LED400W	810	1620 cfm	810 cfm	405 cfm
DR600w	R2.60	159	118.0	236.0	78.5	-	-	14	4	14	4	8	10	30 lb	2	8	8x HPS1000W	8x LED600W	1263	2525 cfm	1263 cfm	631 cfm
OR120	R2.60	37.5	47.0	47.0	78.5	-	-	8	2	8	2	3	2	3	1	1	1x HPS600W	1x LED400W	100	200 cfm	100 cfm	-
OR240w	R2.60	95.7	94.5	47.0	78.5	-	-	10	3	10	2	3	4	30 lb	1	2	2x HPS600W	2x LED400W	201	403 cfm	201 cfm	101 cfm

REF	DESIGNATION	DESIGNATION	DR60	DR90	DR120	DR150	DR240	DR300	DR480w	DR600w
T19-A	Pole Ø19 mm 554 mm long	Pole Ø0.75" 21.8" long	15			30		72		
T19-B	Pole Ø19 mm 726 mm long	Pole Ø0.75" 28.6" long	8	19					50	
T19-C	Pole Ø19 mm 826 mm long	Pole Ø0.75" 32.5" long		4	8		16			
T19-D	Pole Ø19 mm 975 mm long	Pole Ø0.75" 38.4" long			8	8	36	18		
T19-E	Pole Ø19 mm 1153 mm long	Pole Ø0.75" 45.4" long			8	8	8	8		
C19-Y	Corner Ø19 mm 3 axes Y shape	Corner Ø0.75" 3 axes Y shape			8	8	8	8		
C19-K	Corner Ø19 mm 4 axes K shape	Corner Ø0.75" 4 axes K shape			4	4	8	4		
C19-L	Link Ø19 mm Straight Joint	Link Ø0.75" Straight Joint			4	4	2	2		
C19-XL	Link Ø19 mm Straight Joint XL	Link Ø0.75" Straight Joint XL			6	6	16	16		
C19-HI	Handling Ø19 mm 1 axe I shape	Handling Ø0.75" 1 axe I shape			4	4	12	12		
C19-SB	Space Booster Ø19 mm 2 axes Y shape	Space Booster Ø0.75" 2 axes Y shape			4	4	1	1		
C19-RF	Rubber Feet Ø19 mm 1 axe I shape	Rubber Feet Ø0.75" 1 axe I shape			10x Link Ring O shape					
C19-RG	10x Link Ring O shape									

## MAIN TECHNO DR R3.00

Main Fabric: Mylar 210D  
 Poles Ø0.75"  
 Plastic Corners 0.2" thick  
 Water Tray: Mylar 210D  
 Space Booster Inc.  
 Web Plant Support Inc.  
 Bag Fabric: 600D

## MAIN TECHNO DR R2.60

Main Fabric: Mylar 210D  
 Poles Ø0.75"  
 Plastic Corners 0.2" thick  
 Water Tray: Mylar 210D  
 Bag Fabric: 600D

## MAIN TECHNO OR R2.60

Main Fabric: Orca 210D  
 Poles Ø0.75"  
 Plastic Corners 0.2" thick  
 Water Tray: Mylar 210D  
 Bag Fabric: 600D





[www.secretjardin.com](http://www.secretjardin.com) - [info@secretjardin.com](mailto:info@secretjardin.com)

Q3 - 2016